



World Trail Orienteering Championships  
Zákupy, Czech Republic  
July 1 – 7, 2022

**Bulletin 1**

## CONTENT

<b>WELCOME WORDS</b>	<b>3</b>
<b>VENUE</b>	<b>4</b>
<b>ORGANIZERS</b>	<b>5</b>
<b>CLASSES AND COMPETITION RULES</b>	<b>5</b>
<b>EVENT PROGRAMME</b>	<b>6</b>
<b>TRAINING POSSIBILITIES</b>	<b>6</b>
<b>ACCOMODATION</b>	<b>6</b>
<b>EMBARGOED AREAS</b>	<b>7</b>
<b>TERRAINS, PREVIOUS MAPS</b>	<b>8</b>
<b>SPONZORS AND PARTNERS</b>	<b>10</b>



 +420 951 554 209

 WTOC2022

 INFO@WTOC2022.CZ

 [HTTPS://WWW.WTOC2022.CZ/](https://www.wtoc2022.cz/)

## WELCOME WORDS

Dear orienteering fans,

On behalf of the municipality of Zákupy and, I believe, on behalf of our citizens as well, I would like to invite all participants of the World Championships to our region.

Zákupy is a town with a long and rich history dating back to the 14th century. History has left us a number of artistic and cultural monuments, the crown of which is the castle, which has become a symbol of the upcoming championships.

Of historical interest, it is also worth mentioning our Volunteer Fire Brigade, the first such corps in Austria-Hungary, founded 170 years ago.

The town is located in a picturesque landscape containing sandstone formations and remnants of volcanic activity (e.g. the dominant feature of the town, the basalt cone Kamenický vrch), which have long attracted people for visiting and settling in this region. We hope that you will also enjoy the sport competition here.

Zákupy currently offers a rich social life including cultural (the oldest Czech amateur theater group in our region operates here) and sporting events (our primary school contains a sports complex, which will partly serve the purposes of WTOC). We therefore hope that we will be able to create an atmosphere appropriate to the importance of the event.



**Radek Lípa**  
Mayor of Zákupy

On behalf of the organizers of the World Trail Orienteering Championship, I would like to invite competitors, accompanying persons, spectators and public race participants to the Czech Republic.



**Petr Karvánek**  
Event director

WTOC will take place in a region full of orienteering history. Many of you may know the traditional international orienteering event Bohemia Orienteering. We hope that the terrain we offer you will bring an extraordinary orienteering experience.

The Czech Republic has hosted many important events in all orienteering disciplines in recent years, and the Trail-O World Championship is returning to us after fourteen years.

We believe that together we will organize one of the most demanding and highest quality World Trail-O Championships.



## VENUE

WTOC 2022 will be held in the area of Northern Bohemia.

The event center is located in Zákupy, a small town from the 13th century, which lies in the heart of the protected landscape area Kokořínsko – Máchův kraj. In the town there is a historical castle (see cover photo) that hosted the wedding of the Austro-Hungarian heir Archduke Franz Ferdinand, whose assassination in Sarajevo led to World War I. The castle will host the ceremonies of the World Championships.



Kokořínsko is a beautiful natural region of rocks, small lakes and villages full of traditional architecture. It is known for its unique sandstone towers, gates, windows and other formations. Sandstone sedimented here 80 – 90 million years ago, when the area was flooded by a prehistoric sea. Labské pískovce (the Elbe Sandstones) is a similar area surrounding the Elbe river valley.

<http://www.doksy.com/en>



Accommodation for participants will be prepared in the regional capitol Liberec and one of the Pre-O competition days will be held close to Liberec in another landscape protected area – Jizerské hory (the Ižera Mountains). The mountain range consists primarily of granite. The weather conditions are characterized by high annual precipitation.

<http://www.jizerske-hory.cz/en>

Distances:

Prague airport – Zákupy	100 km
Prague airport – Liberec	125 km
Zákupy – Liberec	45 km

## ORGANIZERS

The event will be organized by the orienteering club “Vysokoškolský sportovní klub MFF UK Praha”, with the support of the Czech Orienteering Association and International Orienteering Federation.



Main officers:

<a href="#">Petr Karvábek</a>	Event Director
<a href="#">Helena Nyklová</a>	Secretary
<a href="#">Libor Forst</a>	Course Setter
<a href="#">Robert Miček</a>	Mapper
<a href="#">Jakub Valach</a>	Design
<a href="#">Jiří Pavlů</a>	IT & Equipment
<a href="#">Lenka Forstová</a>	Marshal Supervisor

Event supervisors:

<a href="#">Ján Furucz (SVK)</a>	IOF Senior Event Adviser
<a href="#">Miroslav Šimek</a>	National Controller

## CLASSES AND COMPETITION RULES

In the individual PreO competitions and in the TrailO Relay there is one O (Open) and one P (Physically challenged) class. In the TempO competition there is a single Open class.

The Competition Rules for IOF Trail Orienteering Events (valid from 1 January 2020) shall apply to the World Trail Orienteering Championships 2022. Rules are available for download from the Rules section at the official IOF website ([www.orienteering.sport](http://www.orienteering.sport)). There are no deviations from the Competition Rules.

## EVENT PROGRAMME

DATE	EVENT	LOCATION
JULY 1, FRIDAY	Event Office Opens, Arrivals	Liberec
	Opening Ceremony	Zákupy
JULY 2, SATURDAY	Model Event	Sosnová
JULY 3, SUNDAY	PreO – Day 1	Zaječí Důl
JULY 4, MONDAY	PreO – Day 2	<i>to be decided</i>
JULY 5, TUESDAY	TempO	Sosnová, Zákupy
JULY 6, WEDNESDAY	Relay	Spálený vrch
	Closing Ceremony & Banquet	Liberec
JULY 7, THURSDAY	Departures	

Public races will be held on one of the Pre-O days and on the TempO Qualification course.

## TRAINING POSSIBILITIES

One year before WTOC, there will be a PreWTOC Event connected to the Foot-O World Orienteering Championships 2021 in Doksy. This event will be organized by the same organizing team as WTOC, by the same course setter, on maps from the same mapper, in the same area and season. Since PreWTOC is planned to be a WRE and ECTO event, you will be able to find it in the IOF Eventor, soon.

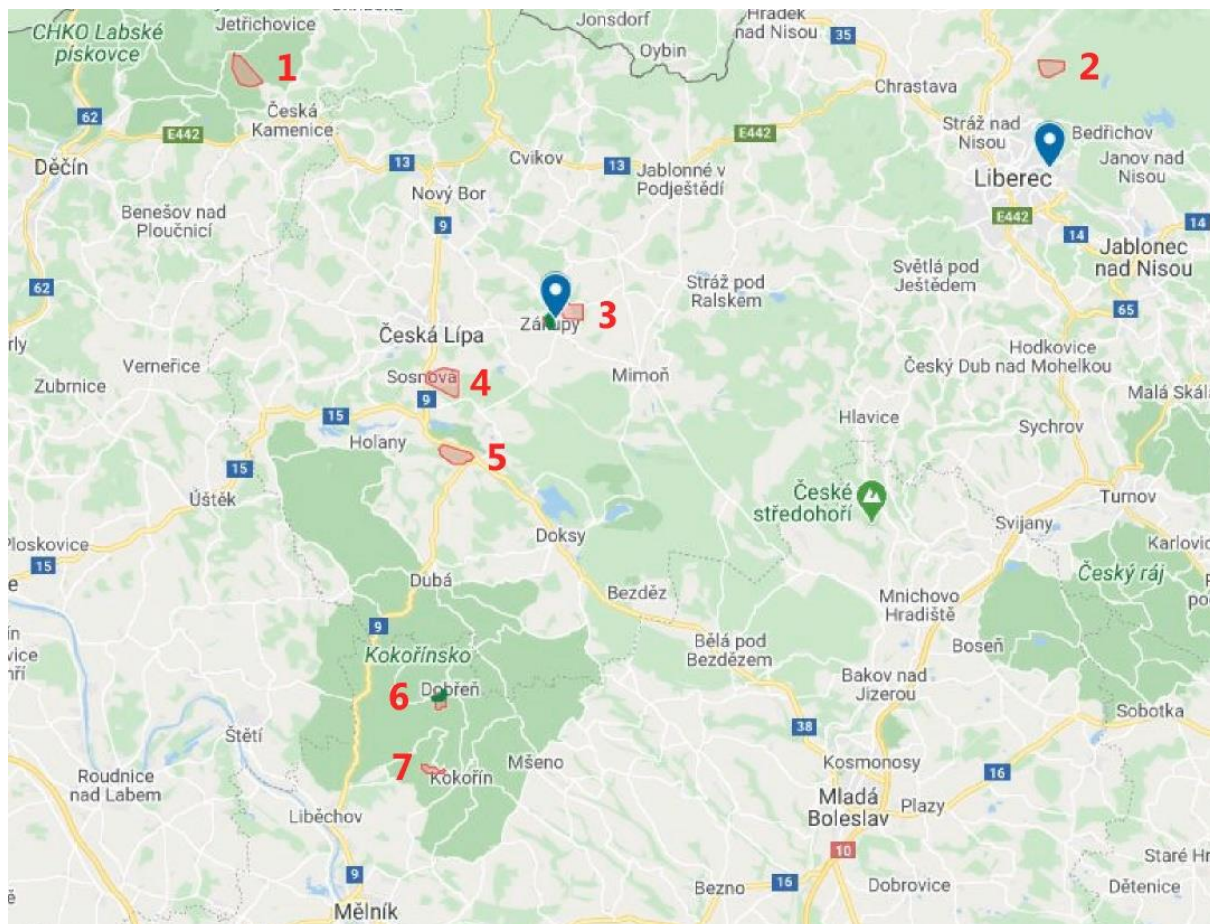
More information about training possibilities will be published on the official WTOC website.

## ACCOMODATION

The main accommodation facility is located in Liberec at the Technical University of Liberec student dormitory. The accommodation is not organized by event organizers, so you should contact the university dormitory management directly.

## EMBARGOED AREAS

Embargoed areas are published according to the IOF rules (in a Google map) in the IOF Eventor (<https://eventor.orienteering.org/Documents/Event/3826/1/Embargoed-areas>).



- |   |                          |   |                                |
|---|--------------------------|---|--------------------------------|
| 1 | Area Borovina (Všemily)  | 5 | Area Pruský kámen (Jestřebí)   |
| 2 | Area Zaječí Důl (Fojtka) | 6 | Area Spálený vrch (Šemanovice) |
| 3 | Area Zákupy              | 7 | Area Truskavenský důl          |
| 4 | Area Sosnová             |   |                                |

All embargoed areas are out of bounds for all potential WTOC 2022 team members (competitors, officials, escorts, etc.) and any other person who may influence the results of the competitions by any knowledge of the terrain.



## TERRAINS, PREVIOUS MAPS

### 1. Pevnost (50.8367325N, 14.3709478E)

Old map of entire area: *Pevnost 2*

1:10 000, e=5m, 1998, ISOM

Last map: *Srbský kámen*

1:7 500, e=5m, 2019, ISOM

Sandstone terrain with long deep valleys and high rock formations in several floors.

Elevation 200 – 300m above sea level.

Last FootO competition in year 2019. Never used for TrailO.



### 2. Zaječí Důl (48.173663N, 16.978794E)

Old map: *Nad lomem 2*

1:10 000, e=5m, 2016, ISOM

A typical terrain of Jizerské hory (the Ižera Mountains) with plenty of boulders.

Elevation 500 – 700m above sea level.

Last FootO competition in year 2016. Never used for TrailO.



### 3. Zákupy (50.6881039N, 14.6440933E)

No old map.

Castle park and forests around the town with rock formations.

Elevation 250 – 450m above sea level.

No orienteering competitions.

### 4. Sosnová (50.6580169N, 14.5328458E)

Old map: *Sosnová 2016*

1:10 000, e=5m, 2016, ISOM

Area with “positive” objects – sandstone rock formations rising from the terrain.

Elevation 250 – 300m above sea level.

Last FootO competition in year 2016.

Never used for TrailO.





### 5. Pruský kámen (50.6073931N, 14.5769736E)

Old map: *Pruský kámen 2017*

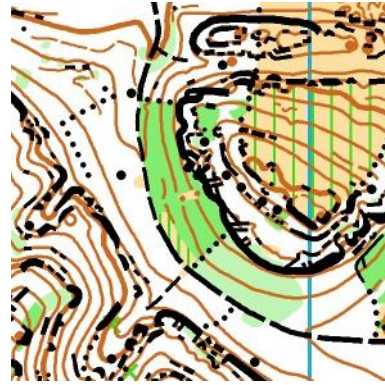
1:10 000, e=5m, 2017, ISOM

Sandstone terrain with long deep valleys and high rock formations in several floors.

Elevation 250 – 350m above sea level.

Last FootO competition in year 2018.

Last TrailO competition in year 2015.



### 6. Spálený vrch (50.4702542N, 14.5517181E)

Old map: *Šemanovice*

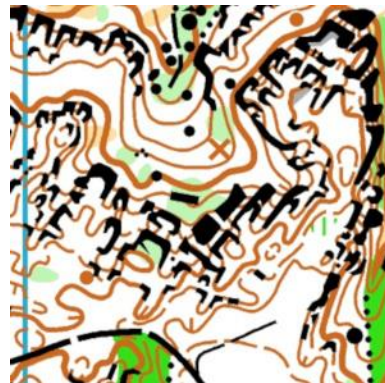
1:10 000, e=5m, 2016, ISOM

Area with “negative” objects – reentrants, sandstone rock passages and formations observed from the top.

Elevation 300 – 400m above sea level.

Last FootO competition in year 2013.

Never used for TrailO.



### 7. Truskavenský důl (50.4351006N, 14.5509561E)

No old map.

Sandstone terrain with long deep valleys and high rock formations in several floors.

Elevation 250 – 300m above sea level.

No orienteering competitions.

In all terrains, there are good (mostly forest) roads with a firm surface and no big climb.

## SPONZORS AND PARTNERS

The event is organized by the University Sport Club of the Faculty of Mathematics and Physics of the Charles University under the patronage of the dean of the Faculty



<http://www.mff.cuni.cz/en>

Main sponsor:



<http://www.pre.cz/en>

Partners:



Town of Zákupy



The Study Program U3V at MFF UK

