



World Trail Orienteering Championships
Zákupy, Czech Republic
July 1 – 7, 2023

Bulletin 2

CONTENT

WELCOME WORDS	3
VENUE.....	4
ORGANIZERS	5
CLASSES AND COMPETITION RULES	5
EVENT PROGRAMME	6
TRAINING POSSIBILITIES	6
ENTRIES.....	6
EMBARGOED AREAS	7
TERRAINS, PREVIOUS MAPS.....	8
COURSE PARAMETERS, MAPS	9
ESCORT, TRANSPORT	10
ACCOMODATION	10
VISA	10
CLIMATE	10
SPONZORS AND PARTNERS	11



☎ +420 951 554 209

📘 WTOC2023

✉ INFO@WTOC2023.CZ

🌐 [HTTPS://WWW.WTOC2023.CZ/](https://www.wtoc2023.cz/)

WELCOME WORDS

Dear orienteering fans,

On behalf of the municipality of Zákupy and, I believe, on behalf of our citizens as well, I would like to invite all participants of the World Championships to our region.

Zákupy is a town with a long and rich history dating back to the 14th century. History has left us a number of artistic and cultural monuments, the crown of which is the castle, which has become a symbol of the upcoming championships.

Of historical interest, it is also worth mentioning our Volunteer Fire Brigade, the first such corps in Austria-Hungary, founded 170 years ago.

The town is located in a picturesque landscape containing sandstone formations and remnants of volcanic activity (e.g. the dominant feature of the town, the basalt cone Kamenický vrch), which have long attracted people for visiting and settling in this region. We hope that you will also enjoy the sport competition here.

Zákupy currently offers a rich social life including cultural (the oldest Czech amateur theater group in our region operates here) and sporting events (our primary school contains a sports complex, which will partly serve the purposes of WTOC). We therefore hope that we will be able to create an atmosphere appropriate to the importance of the event.



Radek Lípa
Mayor of Zákupy

On behalf of the organizers of the World Trail Orienteering Championship, I would like to invite competitors, accompanying persons, spectators and public race participants to the Czech Republic.



Petr Karvánek
Event director

WTOC will take place in a region full of orienteering history. Many of you may know the traditional international orienteering event Bohemia Orienteering. We hope that the terrain we offer you will bring an extraordinary orienteering experience.

The Czech Republic has hosted many important events in all orienteering disciplines in recent years, and the Trail-O World Championship is returning to us after fourteen years.

We believe that together we will organize one of the most demanding and highest quality World Trail-O Championships.

VENUE

WTOC 2023 will be held in the area of Northern Bohemia.

The Event center is located in Zákupy, a small town from the 13th century, which lies in the heart of the protected landscape area Kokořínsko – Máchův kraj. In the town there is a historical castle (see cover photo) that hosted the wedding of the Austro-Hungarian heir Archduke Franz Ferdinand, whose assassination in Sarajevo led to World War I. The castle will host the ceremonies of the World Championships.



Kokořínsko is a beautiful natural region of rocks, small lakes and villages full of traditional architecture. It is known for its unique sandstone towers, gates, windows and other formations. Sandstone sedimented here 80–90 million years ago, when the area was flooded by a prehistoric sea. Labské pískovce (the Elbe Sandstones) is a similar area surrounding the Elbe river valley.

<http://www.doksy.com/en>



Accommodation for participants will be prepared in the regional capitol Liberec and one of the Pre-O competition days will be held close to Liberec in another landscape protected area – Jizerské hory (the Ižera Mountains). The mountain range consists primarily of granite. The weather conditions are characterized by high annual precipitation.

<http://www.jizerske-hory.cz/en>

Distances:

Prague airport – Zákupy	100 km
Prague airport – Liberec	125 km
Zákupy – Liberec	45 km

ORGANIZERS

The event will be organized by the orienteering club “Vysokoškolský sportovní klub MFF UK Praha”, with the support of the Czech Orienteering Association and International Orienteering Federation.



Main officers:

Petr Karvánek	Event Director
Helena Nyklová	Event Office
Libor Forst	Course Setter
Robert Miček	Mapper
Jakub Valach	Design
Jiří Pavlů	IT & Equipment
Lenka Forstová	Marshal Supervisor

Event supervisors:

Ján Furucz (SVK)	IOF Senior Event Adviser
Miroslav Šimek	National Controller

CLASSES AND COMPETITION RULES

In the individual PreO competitions and in the TrailO Relay there is one O (Open) and one P (Physically challenged) class. In the TempO competition there is a single Open class.

The Competition Rules for IOF Trail Orienteering Events (valid from 1 January 2022) shall apply to the World Trail Orienteering Championships 2023. Rules are available for download from the Rules section at the official IOF website (www.orienteering.sport). There are no deviations from the Competition Rules.

EVENT PROGRAMME

DATE	EVENT	LOCATION
JULY 1, SATURDAY	Event Office Opens, Arrivals	<i>TBD</i>
	Opening Ceremony	<i>TBD</i>
JULY 2, SUNDAY	Model Event	Sosnová
JULY 3, MONDAY	PreO – Day 1	Zaječí Důl
JULY 4, TUESDAY	PreO – Day 2	Všemily
JULY 5, WEDNESDAY	Relay	Spálený vrch
JULY 6, THURSDAY	TempO	Sosnová, Zákupy
JULY 7, FRIDAY	Closing Ceremony & Banquet	<i>TBD</i>
	Departures	

Public races will be held on the PreO Day 2 and on the TempO Qualification course.

TRAINING POSSIBILITIES

On request, the organizers can provide maps for team preparations on similar terrains. The maps were used for the PreWTOC Event in Jestřebí in June 2022.

More information about training possibilities will be published on the official WTOC website (www.wtoc2023.cz).

ENTRIES

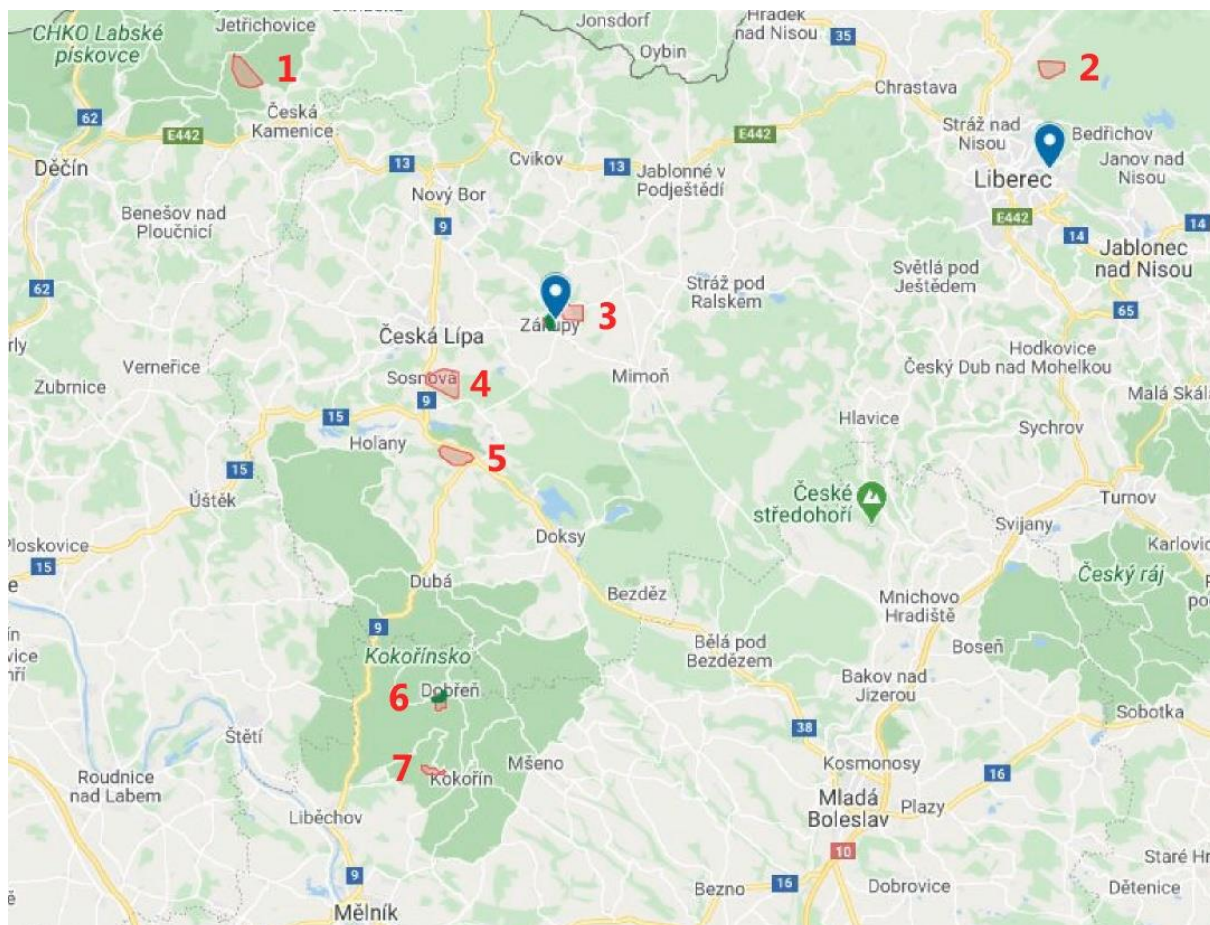
The team size deadline is 30th April 2023. An entry has mandatory content according to the IOF rules (9.6). The team names deadline is 22nd June 2023. All entries have to be made through IOF Eventor; the entries will be open in January 2023. Late entries will be surcharged as stated in the IOF rules (7.4). Entries will not be valid until the entry fee has been paid. The payment must be made by 31st May 2023. The payment details:

Bank: Fio banka, a.s., V Celnici 1028/10, 117 21 Praha 1, BIC: FIOBCZPPXXX
Account Nr. 2601722729/2010, IBAN CZ06 2010 0000 0026 0172 2729
Enter Federation name in the Note for the Beneficiary.

FEE	FOR	EUR
ENTRY FEE	PreO	110
	TempO	80
	Relay (per team)	160
ACCREDITATION FEE	Athlete	90
	Team Official	110
	Accompanying Person, Escort	free

EMBARGOED AREAS

Embargoed areas are published according to the IOF rules (in a Google map) in the IOF Eventor (<https://eventor.orienteering.org/Documents/Event/3826/1/Embargoed-areas>).



- | | | | |
|---|--------------------------|---|--------------------------------|
| 1 | Area Borovina (Všemily) | 5 | Area Pruský kámen (Jestřebí) |
| 2 | Area Zaječí Důl (Fojtka) | 6 | Area Spálený vrch (Šemanovice) |
| 3 | Area Zákupy | 7 | Area Truskavenský důl |
| 4 | Area Sosnová | | |

All embargoed areas are out of bounds for all potential WTOC 2023 team members (competitors, officials, escorts, etc.) and any other person who may influence the results of the competitions by any knowledge of the terrain.

The embargo for area #5 was released after the PreWTOC 2022 event. The area #4 was slightly reduced – see the Google map.

TERRAINS, PREVIOUS MAPS

1. Pevnost (50.8367325N, 14.3709478E)

Old map of entire area: *Pevnost 2*

1:10 000, e=5m, 1998, ISOM

Last map: *Srbský kámen*

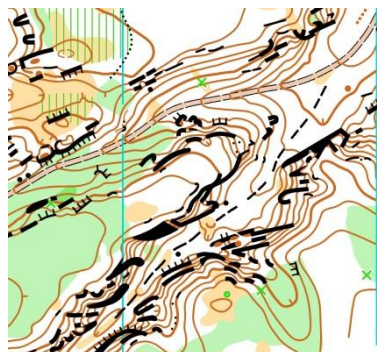
1:7 500, e=5m, 2019, ISOM

Sandstone terrain with long deep valleys and high rock formations in several floors.

Elevation 200–300 m above sea level.

Last FootO competition in year 2019.

Never used for TrailO.



2. Zaječí Důl (50.8308447N, 15.0547014E)

Old map: *Nad lomem 2*

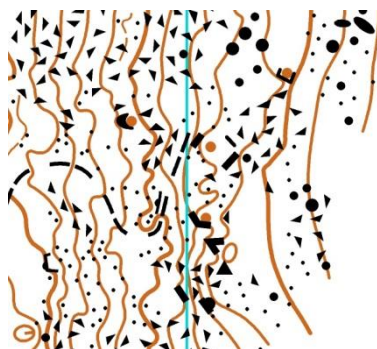
1:10 000, e=5m, 2016, ISOM

A typical terrain of Jizerské hory (the Ižera Mountains) with plenty of boulders.

Elevation 500–700 m above sea level.

Last FootO competition in year 2016.

Never used for TrailO.



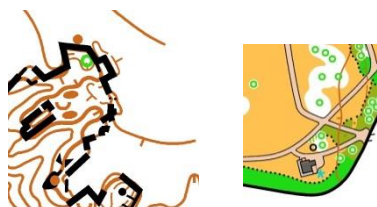
3. Zákupy (50.6881039N, 14.6440933E)

No old map.

Castle park and forests around the town with rock formations.

Elevation 250–450 m above sea level.

No orienteering competitions.



4. Sosnová (50.6580169N, 14.5328458E)

Old map: *Sosnová WTOC*

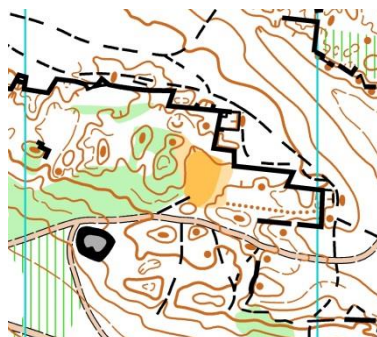
1:3 000, e=2.5m, 2022, ISSprOM

Area with “positive” objects – sandstone rock formations rising from the terrain.

Elevation 250–300 m above sea level.

Last FootO competition in year 2016.

Last TrailO competition in year 2022.



5. Spálený vrch (50.4702542N, 14.5517181E)

Old map: *Šemanovice*

1:10 000, e=5m, 2016, ISOM

Area with “negative” objects – reentrants, sandstone rock passages and formations observed from the top.

Elevation 300–400 m above sea level.

Last FootO competition in year 2013.

Never used for TrailO.



6. Truskavenský důl (50.4351006N, 14.5509561E)

No old map.

Sandstone terrain with long deep valleys and high rock formations in several floors.

Elevation 250–300 m above sea level.

No orienteering competitions.

COURSE PARAMETERS, MAPS

COMPETITION	LENGTH	TASKS	TC	ACCESSIBILITY	CLIMB
PREO 1	400 m	30	2x3	very good forest path	25 m
PREO 2	450 m	30	2x3	very good forest path	10 m
RELAY	3x500 m	3x10	4x5*	good forest path, 60 m grass	10 m
TEMPO QUAL	1000 m		6x5	asphalt, 200 m good forest path	10 m
TEMPO FINAL	800 m		8x5	asphalt, hard sand park path	10 m

*) The last leg has one additional public TempO station.

All maps have been made in the period 2020-2021 and will be revised in 2023. All maps are prepared according to the ISSprOM in scale 1:4 000, enlarged to 1:3 000, contour interval 2.5 m.

ESCORT, TRANSPORT

The escort for mechanical wheelchairs is not strictly required but recommended. There is no accreditation fee for the escort. There are no steep climbs on the timed parts of the courses. Steeper sections might be on the tracks out of the timed parts, extra pushers will be there.

Organizers do not organize any transport to or from the Event center. Teams, VIPs and media representatives are free to use their own transport to all the competitions. There will be reserved parking areas at all the arenas. On some days, there will be organized transport from the arena to the start and from the finish to the arena. Athletes with electric wheelchairs that are too big to fit into a standard wheelchair car will be allowed to go to start with their cars if there is another driver that can drive the car back to the arena.

ACCOMODATION

The main accommodation facility is the students' hostel of the Technical University of Liberec. The WTOC organizers do not organize the accommodation, the participants should contact the university hostel directly. The current price for a double room is approximately 26 EUR, but actual prices should be checked directly on the page <https://letniubytovani.tul.cz/?lang=en>. However, the number of accessible rooms is limited. We recommend searching for other accommodation in the region as well, e.g. in Liberec and Doksy, there are more accommodation facilities offering some accessible rooms. Unfortunately, each of them offers only a few accessible rooms so none could be chosen as the main accommodation facility for all teams.

Note: The Team Officials Meetings will probably be in Zákupy and we will try to organize them as online to ease participation of all teams on them.

VISA

Citizens of some countries must obtain a visa in order to enter the Czech Republic as well as any country of the Schengen area. The current information can be found on the web site <https://www.schengenvisainfo.com/czech-republic-visa>.

CLIMATE

The climate in the entire area is continental with average July temperatures slightly below 20° C. However, there were also exceptional days with 35° C in last years.

SPONZORS AND PARTNERS

The event is organized by the University Sport Club of the Faculty of Mathematics and Physics of the Charles University under the patronage of the dean of the Faculty



CHARLES UNIVERSITY
Faculty of mathematics
and physics

Main sponsor:



<http://www.pre.cz/en>

Partners:



Town of Zákupy



The Study Program U3V at MFF UK

